



**EUROPE'S LEADING TEMPORARY SECURITY SPECIALIST**

**CONSTRUCTION & INFRASTRUCTURE**





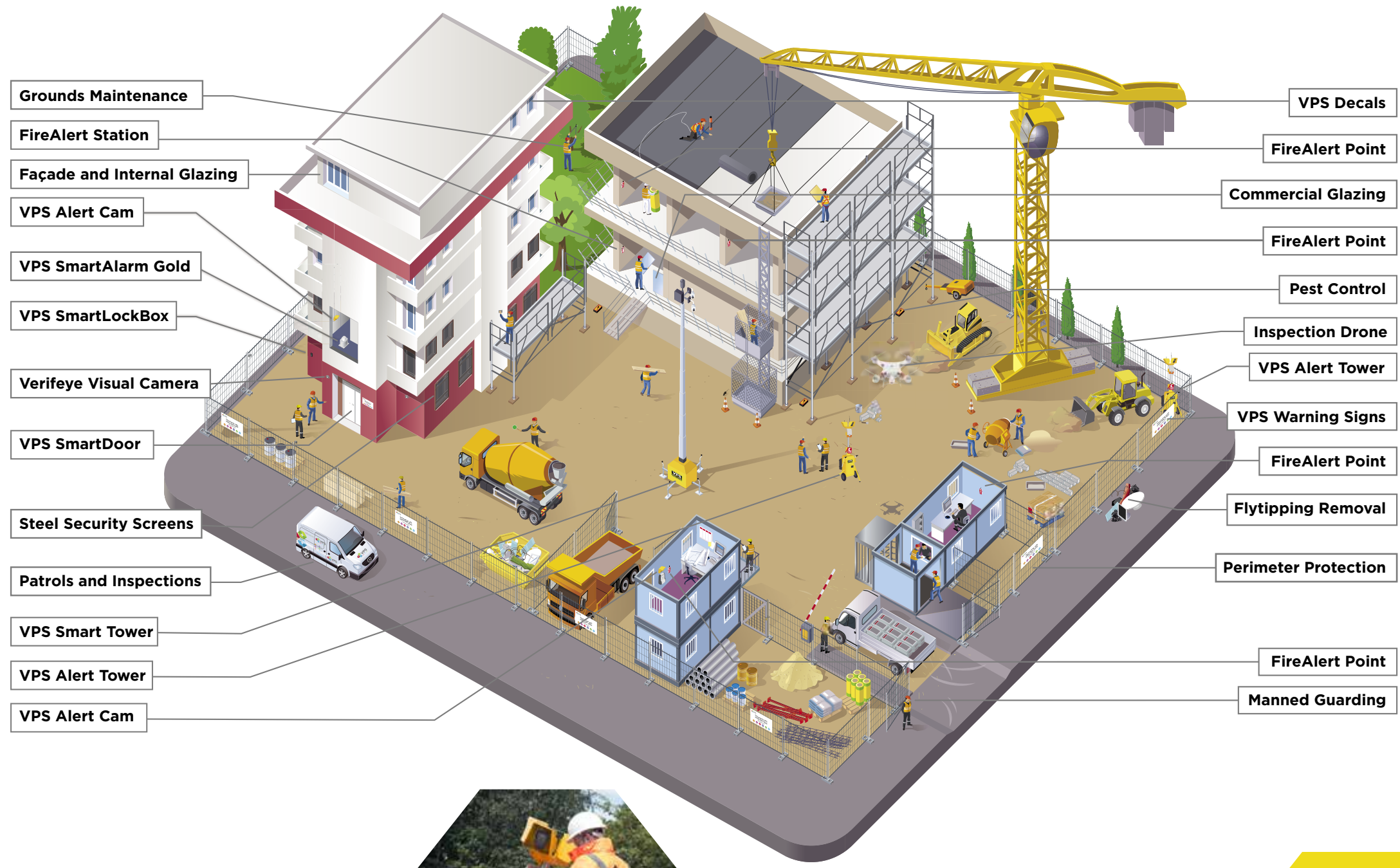
# LEADING THE WAY USING OUR MONITORED TECHNOLOGY SOLUTIONS

VPS is Europe's market leader in rapidly deployable, monitored technology solutions for protecting large and remote sites. With the leading range of stand-alone, fully integrated, rapidly deployable, mobile security solutions.

VPS prides itself on delivering service excellence and reliability at a local level. As specialists in temporary and remote site security, we understand how important it is to deliver a cost-effective solution without compromising on protection.

# COVERING ALL YOUR SITE SECURITY NEEDS

VPS has solutions to cover the complete needs of even the remotest of sites. VPS site risk assessors work with site managers to find the right mix of people and technology to provide protection at the most cost-effective level without compromising security. Site and security measures will be reviewed as the project develops to ensure nothing is compromised.





## MONITORED TECHNOLOGY SOLUTIONS

Advanced camera technology wirelessly transmits live and recorded images over any mobile network. 24/7 monitoring which is carried out at our fully accredited inhouse monitoring station, combined with live verbal alerts, white light floodlights, and siren warnings creates an extremely effective deterrent.

Additionally VPS FireAlert Wes+ provides an innovative and cost-effective fire safety and evacuation system for construction sites, remote sites, and those without electrical supply

**“Not only is the site protected but we can help minimise project delays due to theft/vandalism as well as reducing your site risk profile”**







## VPS SMART TOWER® A DIFFERENT LEVEL OF SECURITY

Our VPS Smart Tower® range incorporates all the components needed to provide effective CCTV monitoring and recording in a robust and rugged housing. A vandal-proof pan-tilt zoom camera is supplemented with two fixed high-definition analytics cameras, a digital recorder, and a public address system.

Monitored wired or wireless CCTV, backed-up by live audio challenges, is proven to help prevent crime.

**For effectiveness and economy, nothing tops a VPS Smart Tower®**

Unique to the market, the VPS Smart Tower offers a quality service that is both more effective and less expensive than traditional guards and equipment.

### Unlike a traditional guard, VPS Smart Tower can:

- Turn 360° whilst 7.5m in the air
- See in the dark
- Detect heat as well as light
- Operate 24/7 without a break
- Remember every detail for at least 30 days

### Zero infrastructure requirements:

- No mounting
- No power
- No additional communications

### Fully accredited monitoring centre

BS 5979 Cat II combines technology with our team of skilled Security Industry Association (SIA) approved operators to guarantee keyholder response.

### Other benefits include:

- Hydrogen fuel option available
- 1-way communication through tower



## VPS SMART TOWER®

Our most effective CCTV solution providing all the protection your sites need.

It was the first rapid deployment CCTV to use thermal cameras with range options of 100m to 2km, and optional ANPR (Automatic Number Plate Recognition) with automatic reporting for construction planning compliance.



## APPLICATIONS

The versatility of the VPS Smart Tower® range is second to none. Deployed in 100's of sites across the UK and Europe, it's suitable for a number of applications including:

- Construction Sites
- Utilities
- Infrastructure Projects
- Event Management

### Protect your public liability

As well as providing a 24/7 security solution the VPS Smart Tower helps you fulfil your public liability obligations by ensuring that any changes to the site are picked up swiftly and any intruders are detected immediately.

In addition, it provides a reliable method for monitoring the comings and goings of authorised personnel, as anyone accessing the site will need to arm and disarm the system, using their own unique PID key.

**Construction**  
**Infrastructure**  
**Utilities**  
**Railways**  
**Housing**  
**Petrochemicals**  
**Events**







## VPS ALERT TOWER – MOBILE, WIRELESS, VIDEO VERIFIED ALARM TOWER

The VPS Alert Tower can be rapidly installed as a stand-alone multi-unit, or seamlessly integrated with other VPS products to provide an outstanding security solution to protect vacant property, construction or remote sites.

- Quick to install
- Battery powered
- Suitable for internal or external use

### VPS Alert Tower features

- Mast height of 1.7m, extendable to 2.3m
- Range of up to 14m in daylight and 12m at night-time
- Can be connected to up to 22 ancillaries (detectors, sounders, etc) and variations of VPS Alert Towers, VPS Smart Towers and VPS Alert Cams.
- Quick installation – standard configuration can be installed in just 45 minutes
- Fitted with wheels and adjustable handles for ease of deployment
- Portable units fit in the back of a medium sized van for easy relocation
- No surrounding infrastructure requirements – battery powered for temporary use (up to 2 years)

### VPS ALERT TOWER®

The rugged VPS Alert Tower is our entry level mobile video verification alarm system offering flexible site and asset protection. The VPS Alert Tower can be anchored to the ground and used as a base to attach point to point active beams, alarm sounders or fire alert points. Bespoke design makes this product unique in the market place. It is perfect for small areas, both outside and inside, where there is particular need for protection or where there is no surrounding infrastructure.



## VPS SMARTEYES

VPS SmartEyes enables locations to be monitored day and night without the need for power, cables or wired communications.

Each detector is battery powered lasting up to 400 days, connecting back to the hub via a mesh network with a 500m range, covering even the largest of sites using less hardware. The hub communicates back to our in house monitoring station via GSM meaning a completely wireless, maintenance free install.

The SmartEyes system also includes fully integrated artificial intelligence via our cloud server. This means the system can automatically recognise people, vehicles, animals and many other objects to make informed decisions, if an event is a threat to a site or not.

This technology reduces false alerts, reducing the amount of unnecessary response units visiting site, therefore decreasing security provision costs. In addition customers can arm and disarm, or view any activations via the mobile app.

All of this power and technology is housed in ruggedized IPX67 housing, making it the perfect system for any site even in the harshest of conditions.

### VPS SMARTEYES

#### ARTIFICIAL INTELLIGENCE

Detector proprietary algorithm detects movement of any events on site. Photos instantly sent to VPS analytics cloud.

**In seconds the event is analysed and monitoring station alerted to any threat.**

#### HIGH DEFINITION IMAGERY

SmartEyes is capable of capturing full high definition imagery in both day and night conditions. **Well positioned detectors can even pick up license plates at night.**

#### LARGE DETECTION RANGE

Each detector has a **35m detection range**, even at night. This means less detectors are needed to cover a site, resulting in reduced costs per system.

#### COMPLETELY WIRELESS

The units are battery powered and all event communications are sent to the **cloud via GSM**. This means rapid installation and additional units can be added without the need for lengthy cable runs.





# MEETING THE HIGHEST STANDARD OF LEGISLATIVE COMPLIANCE WHILST HANDLING THE UNIQUE FIRE SAFETY CHALLENGES OF CONSTRUCTION SITES

## WIRELESS FIRE ALARMS - VPS FIREALERT WES+

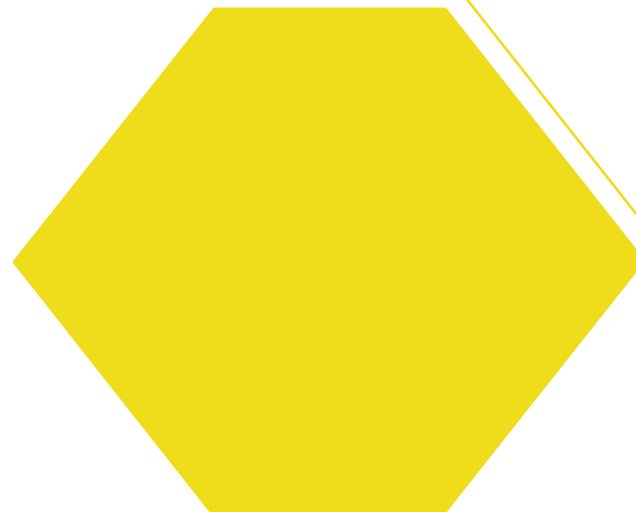
VPS FireAlert Wes+ is an innovative fire safety and evacuation system that helps protect people, property and assets on building and construction sites.

The aim of VPS FireAlert Wes+ system is to give the workforce the earliest possible warning of fire, allowing the maximum time to escape and to call the fire and emergency services if required. This early alert can reduce the risk of injury as well as providing more time to restrain fire spread, minimising damage and financial loss.

This proven FireAlert system is mobile and wireless, with long battery life delivering a cost-efficient, effective and practical solution. Quickly and easily deployed at any location, VPS FireAlert® Wes+ is EN54 compliant, has a CE mark and meets all important fire safety guidelines and legislation.

### Additional Features:

- 3 years battery life, reducing lifetime costs and the need for constant replacement while also improving compliance with waste regulations
- Possibility of unlimited number of units in any combination on one site; adding and removing units is quick and easy as the build progresses; VPS FireAlert Wes+ units can be re-used on future projects
- Real-time system monitoring: each unit monitors itself (battery, signal, etc.)
- Anti-tamper controls to ensure system integrity and compliance
- Transit mode to allow safe removal & storage without risking activation
- Silence test function which eliminates the need of a construction site evacuation during a test, therefore there is no disruption on the site and/or nearby residential area
- No wiring is required
- In case of an incident, the problem can immediately be located and identified preventing delays in the construction project and decreasing the possibility of further damage and injury to employees



## VPS SMARTLOCKBOX

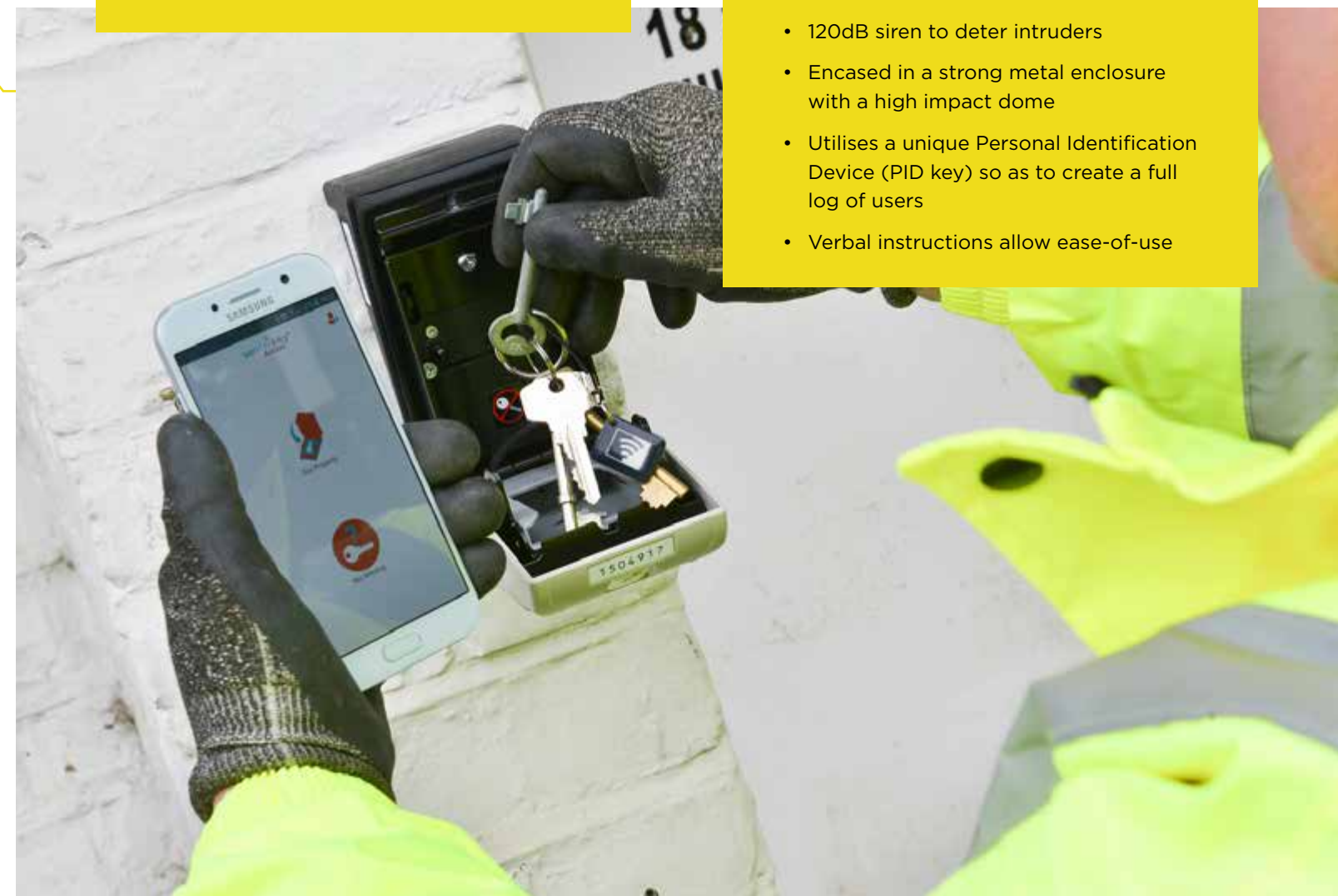
Minimise key holding issues and maximise operational efficiencies with the VPS SmartLockBox.

- Level 2 Police Accreditation - more secure than your front door
- Bluetooth and PIN code access for complete security
- Geo-Fencing enables recording of time accessed and attendance
- Lone-worker Protection for individual employee safety
- Track access through text notifications - provides peace of mind
- Flexibility - stores keys, fobs and cards
- In-App control from your smartphone
- VPS SmartLockBox Management Portal - Fully traceable and online management
- Easy to fit and install securely with 3 years' battery life for peace of mind

## VPS SMARTALARM

The VPS SmartAlarm® range offers all the benefits of a 24/7 monitored alarm system with no requirements for electricity or a phone line. The alarm is entirely stand-alone with a long-life battery and on-board tamper detection, and provides instant detection and alerting on a range of incidents including intruders, flooding and smoke.

- Instantly reports all detected incidents to VPS monitoring station, triggering response team call out
- Ability to pair with camera sensors allowing full visibility of any activity on your site
- 120dB siren to deter intruders
- Encased in a strong metal enclosure with a high impact dome
- Utilises a unique Personal Identification Device (PID key) so as to create a full log of users
- Verbal instructions allow ease-of-use





# GUARDING SOLUTIONS

VPS are the trusted experts in deploying a range of manned guarding solutions across the UK.

Due to our extensive service centre network and in house RVRC monitoring station, guarding requests can be received, actioned and deployed 24/7, meaning that security risks at site can be mitigated within a timely manner, regardless of when they occur.

VPS provide an adaptive and bespoke guarding service across the UK. When the need is urgent, manned guarding is often the quickest and most effective way to protect a void property and mitigate the associated risks.

## We offer:

- Basic SIA licenced guard
- Intermediate guard who will also be trained in customer liaison
- Advanced security guard who is First Aid and Fire Marshall trained
- Dog Handlers

All of our guards are SIA licensed, hold CSCS cards with accreditation for public space CCTV monitoring and keyholding services.



## PERIMETER FENCING

**Site security begins with physical security and a strong fence line.**

Site surveys and security risk assessments will look carefully at perimeter security. A solid fence comprised of anti-climb panels is the first line of defence against intruders and helps to protect employees and members of the public during construction activities.

In addition to traditional mesh panels, security specifications may also include pedestrian barriers, hoardings and traffic demarcation products.

# VPS MONITORING CENTRE

All of our monitored solutions benefit from the award-winning VPS Monitoring Centre support.

Our Monitoring Station operators will carefully evaluate both live and recorded images/activations and will follow an agreed response plan. This could be to immediately contact keyholders, the VPS response team or the Police, depending on the type of system installed. Our team are on hand to ensure that any activation of the security system is communicated to the appropriate individuals for a rapid response.

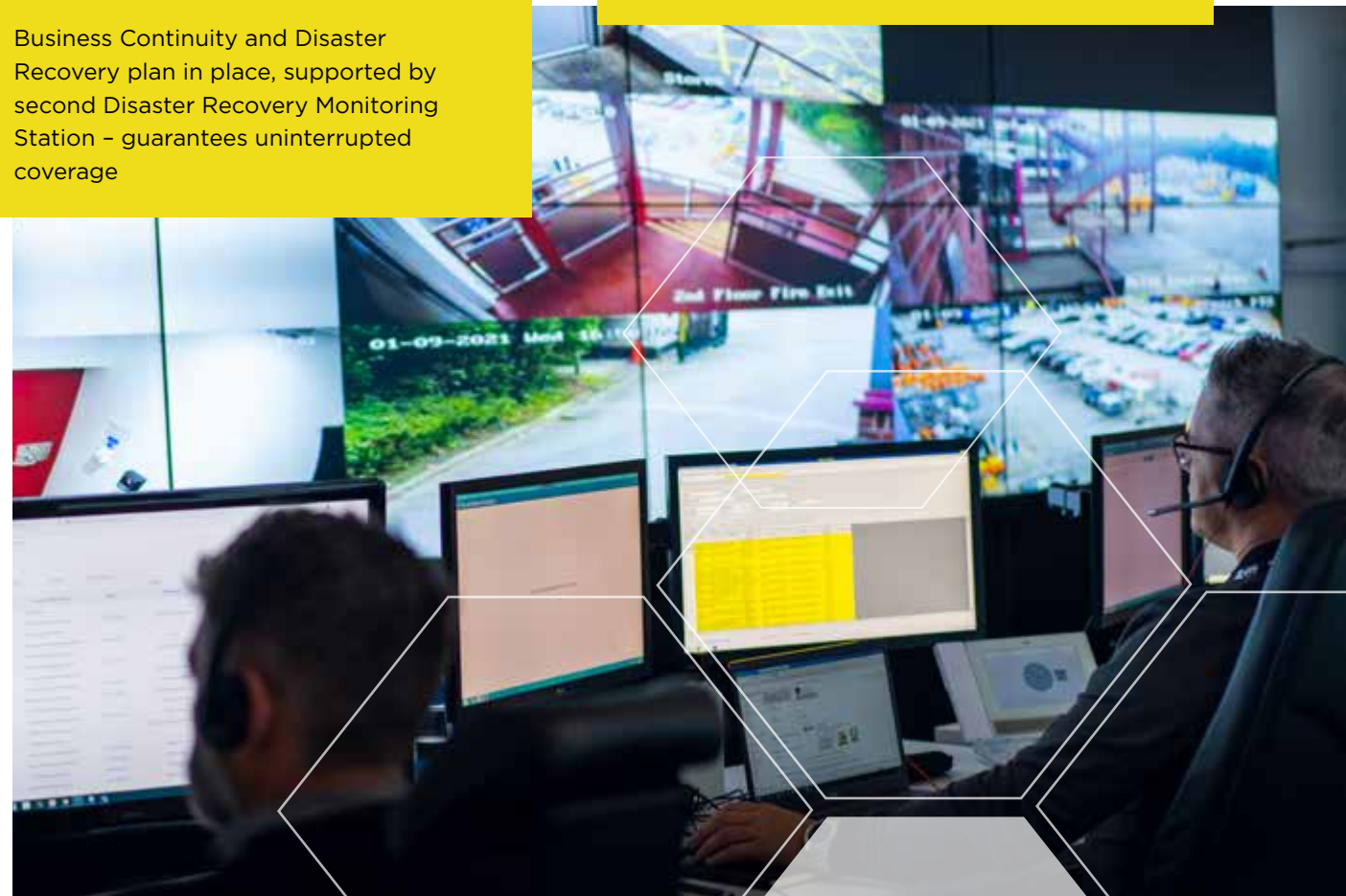
VPS hold a number of industry accreditations covering the full range of products and services offered. This helps provide reassurance over the quality and professionalism of our service, through the standards we adhere to.

ACCREDITATIONS

- BS5979 Cat II - monitoring of received signals from fire and security systems
- BS8418:2015 - monitoring received signals from detector activated CCTV systems
- BS8484:2009 - monitoring received signals and monitoring lone worker devices
- All staff Security Industry Authority (SIA) Licensed for Public Space Surveillance
- Business Continuity and Disaster Recovery plan in place, supported by second Disaster Recovery Monitoring Station - guarantees uninterrupted coverage

SERVICE CAPABILITIES

- CCTV Tower Monitoring
- Issue Audio Challenge
- Alert Tower Monitoring
- Fixed System CCTV Monitoring
- VPS Smart Alarm Monitoring
- Intruder Alarm Monitoring
- Fire Alarm Monitoring
- Lone Worker Management
- Traffic Monitoring
- Variable Message Sign Management
- Remote Access Control
- Call Handling





## WHY CHOOSE US?

VPS is Europe's leading temporary security specialist. Offering our **Intelligent Triple Protection** service which combines, **Monitored Technology, Physical Protection** and **Human Intervention** to bring the best security solution for construction & infrastructure projects using the latest innovations.

Along with other tried and tested VPS products and our manned guard services, VPS are able to provide a comprehensive range of rapid solutions for site monitoring and 24/7 protection.

Our products and services can be used individually or in combination for both large and small sites. We will come to your site, listen to your individual requirements and respond with the best and most cost-effective solution for you.

## CONSTRUCTION AND INFRASTRUCTURE SOLUTIONS:

- Advanced mobile CCTV solutions (VPS Smart Tower)
- Fixed CCTV design, installation, maintenance and monitoring
- Intruder alarm system, design, installation, maintenance and monitoring using the SmartAlarm range
- Lone worker alarms, supply and monitoring
- Fire Detection and evacuation systems for construction with optional first aid call point
- Free-standing, mobile video verified camera towers (VPS Alert Tower)
- Access control including biometric systems, design, installation, maintenance and monitoring
- Thermal cameras (heat detection)



For more information contact  
our temporary security specialists on:

**0330 005 5300**

**[www.vpsgroup.com](http://www.vpsgroup.com)**

## HIGHWAYS AND CONSTRUCTION: INNOVATIVE, FLEXIBLE SECURITY COMPRISING WIRELESS NETWORKS OF VPS SMART TOWER® SYSTEMS, WITH ADVANCED FLUID MESH CONNECTIVITY. A DYNAMIC SOLUTION THAT NOT ONLY PROTECTS THE SITE BUT ADDS OPERATIONAL VALUE FOR COSTAIN HEADS OF VALLEY ROAD IMPROVEMENT PROJECT.

### Background

The A465 is a major road in South Wales spanning 66 miles, and more commonly known as the Heads of the Valley road as it joins together the northern ends (or 'heads') of the South Wales Valleys.

VPS Site Security is working with Costain to provide a fully integrated security and monitoring solution using a combination of its mobile CCTV product (the VPS Smart Tower®) and manpower services. The objectives are to protect a number of construction storage sites as well as monitor the traffic flow over the 14km stretch under construction. The overall scheme is planned for completion in 2018.

### Site Challenges

**Length and remoteness of site**

**Plant equipment security**

**Traffic management**

**Works progress – Constantly evolving site**

### The assessment and recommendations

The starting point for any VPS assessment is to gain a detailed view of the entire site with the client, building up a footprint of the area, checking over the site plans, and combining a summary of local crime reports with an overall risk assessment of the area.

Employing solely guards and monitoring staff along the site would make it difficult to achieve comprehensive 24/7 coverage of the area, and would also be extremely expensive. Relying just on remotely-monitored CCTV technologies may not have enabled quick responses to incidents, particularly those which would affect the traffic flow. Following a detailed risk assessment of the location, perimeter and the operational requirements of the project and the client, the resulting recommendations were a 'best-fit' combination of measures using physical and electronic security equipment combined with a night-time mobile response officer. The aim is to keep the site compounds secure, deter attempted breaches, and ensure any traffic incidents are picked up quickly.

### Solution

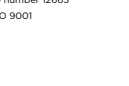
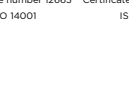
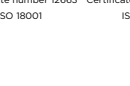
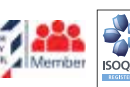
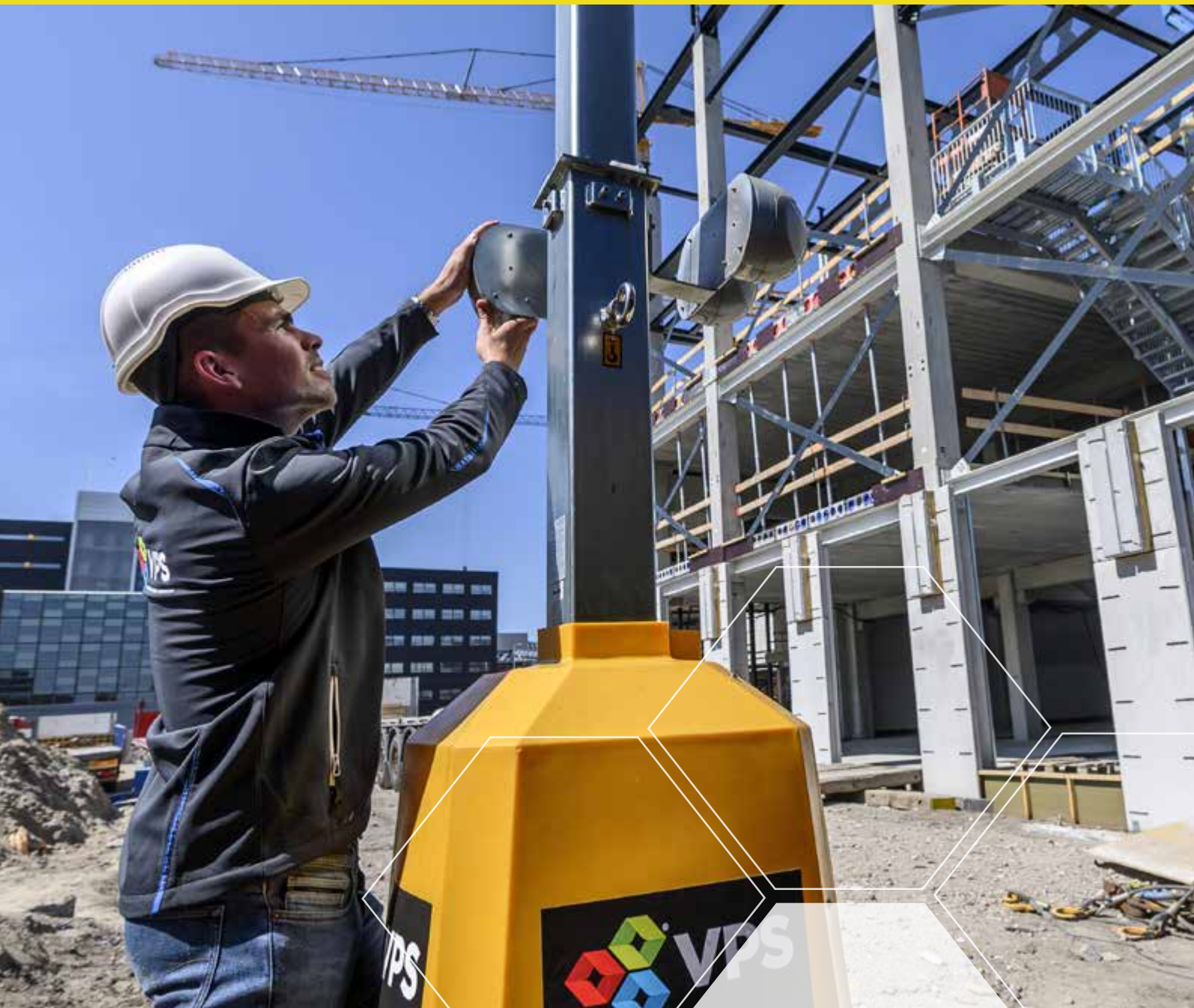
To meet the challenges, VPS Site Security planned an innovative network of 18 VPS Smart Towers® with 36 CCTV cameras installed along the 14km stretch of highway. Because of the remote and difficult terrains, they designed a wireless fluid mesh communications



system that provided unique, advanced connectivity for the towers to allow transmissions to a purpose-built, mobile monitoring station. Additional VPS mobile patrols supported and complimented the overall protection and monitoring service. This network provided a dynamic, flexible solution, enabling 24/7 monitoring, and gave the client multiple benefits for their construction project:

- A safer environment in a busy, live traffic setting
- A fast-track monitoring and alert system to minimise congestion and disruption if a vehicle breaks down or an accident occurs
- Intelligent use of leading edge technologies that dramatically cut the costs of security staff whilst protecting valuable materials and equipment
- The towers provided visible deterrents enhanced by light and voice alerts, with automatic signals sent to the VPS monitoring station if there were attempted breaches
- A mobile control room located within the main compound meant managers could be kept up to date at all times on their tablets, with a real-time view from any of the towers
- Energy supply options ranged from on-site electricity supply, when available, through to stand-alone generators or environmentally sustainable hydrogen fuel cells, where no regular power supply exists
- Mixed solution benefits that contribute to Costain's social capital goals
- A strong partnership that will build and help develop for future, sustainable projects





**VPS UK**  
0330 005 5300  
tellmemore@vpsgroup.com  
[www.vpsgroup.com](http://www.vpsgroup.com)